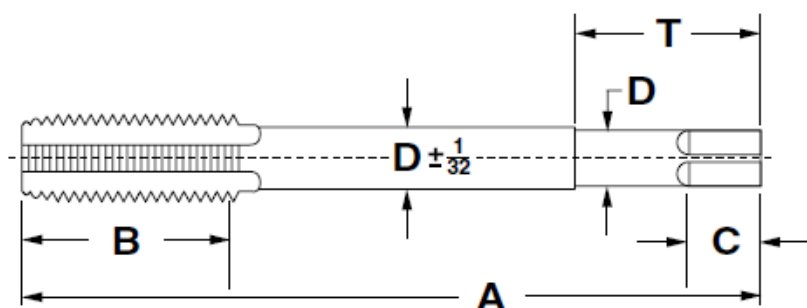


# EXTENSION TAP DIMENSIONS *Table 303A*



The “T” length of the shank diameter of extension taps is ground to close tolerances, whereas the remaining portion of the shank has ordinary bar tolerances. In special applications where the shank is used with a bushing, the entire shank length may be ground to close tolerance upon request.

Size	B Thread Length	D Shank Diameter	C Square Length	Square Size	T Ground Shank Size
6	11/16	.141	3/16	.110	1-1/8
8	3/4	.168	1/4	.131	1-1/4
10	7/8	.194	1/4	.152	1-3/8
1/4	1	.255	5/16	.191	1-1/2
1/4*	1	.185	1/4	.138	1-1/2
5/16	1-1/8	.318	3/8	.238	1-9/16
5/16*	1-1/8	.240	9/32	.180	1-9/16
3/8	1-1/4	.381	7/16	.286	1-5/8
3/8*	1-1/4	.275	3/8	.206	1-5/8
7/16	1-7/16	.323	13/32	.242	1-11/16
1/2	1-21/32	.367	7/16	.275	1-11/16
9/16	1-21/32	.429	1/2	.322	1-7/8
5/8	1-13/16	.480	9/16	.360	2
3/4	2	.590	11/16	.442	2-1/4
7/8	2-7/32	.697	3/4	.523	2-1/2
1	2-1/2	.800	13/16	.600	2-5/8
1-1/8	2-9/16	.896	7/8	.672	2-3/4
1-1/4	2-9/16	1.021	1	.766	2-7/8
1-3/8	3	1.108	1-1/16	.831	3
1-1/2	3	1.233	1-1/8	.925	3

\*Small shank